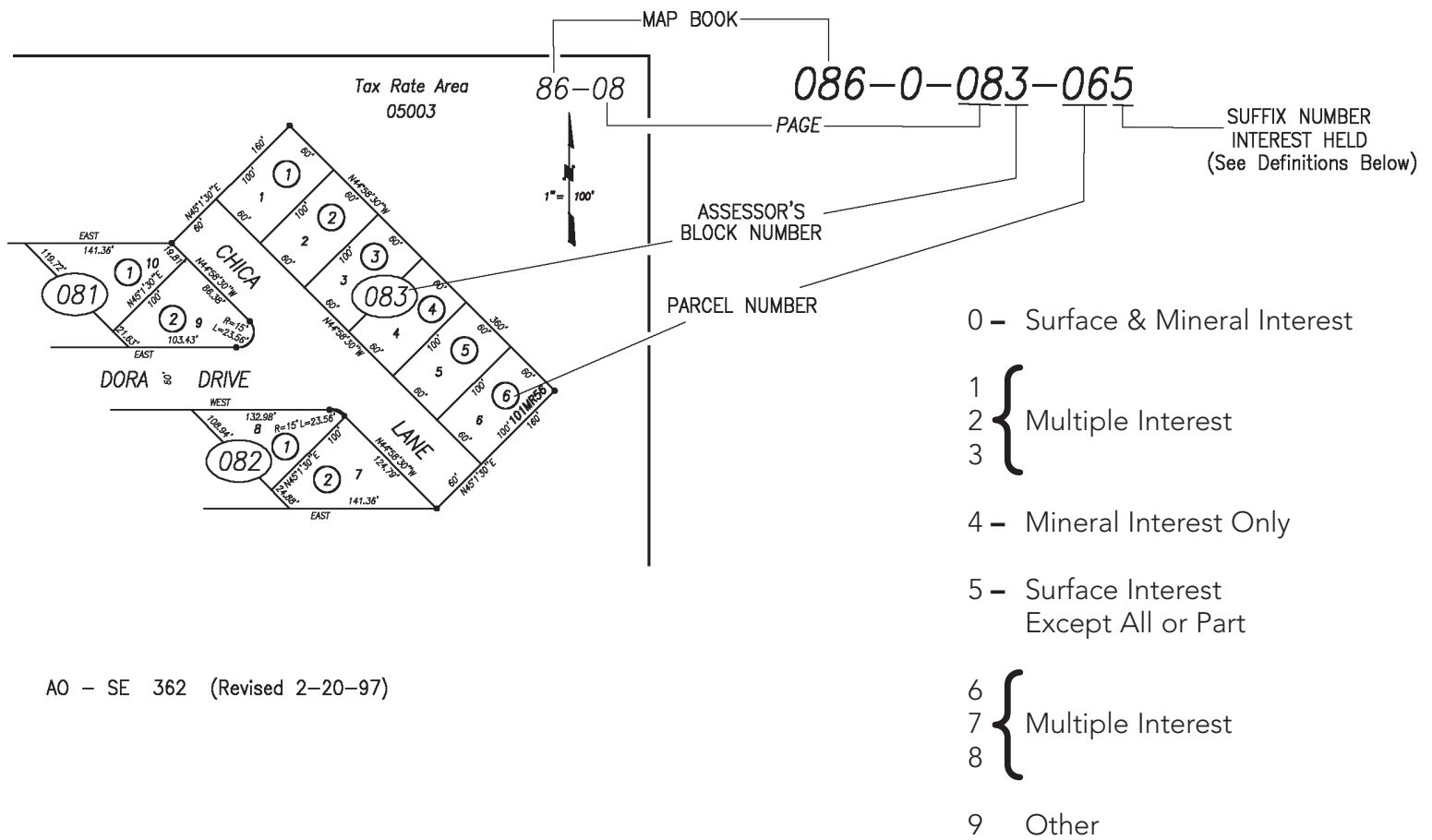


How to read a County Tax Assessor Plat Map

Instructions for Identifying Assessor's Parcel Numbers

The Assessor's Map is not filed with the official county's records. This map is based upon tract maps that are filed with the local county records. The Assessor will include a reference to the maps that have been filed at the county.



AO - SE 362 (Revised 2-20-97)



Steve Logan
805.340.0902
slogan@firstam.com

Joe Siddens
805.218.4515
jsiddens@firstam.com



First American Title

800.983.1500 | www.firstam.com